



P.O. Box 1717
Burlington, VT 05402

Main Tel: 802-651-3200
Main Fax: 802-651-3299

www.democracyforamerica.com

To: Interested Parties
From: Charles Chamberlain, Chair, Democracy for America
Date: July 22, 2019
Re: DFA reacts to the results its July 2019 Presidential Pulse Poll

The third round of Democracy for America's 2020 President Pulse Poll, which we are releasing today, tells the story of a race that has undergone a significant series of changes over the last three months and provides a number of new insights into how progressives (and DFA members, in particular) are thinking about the maturing presidential contest.

With 74,052 votes, the top-line results of our July 2019 Presidential Pulse Poll show:



NATIONWIDE RESULTS

JULY 2019 PRESIDENTIAL PULSE POLL



BERNIE SANDERS : 32.16%



ELIZABETH WARREN: 25.78%



KAMALA HARRIS: 11.81%

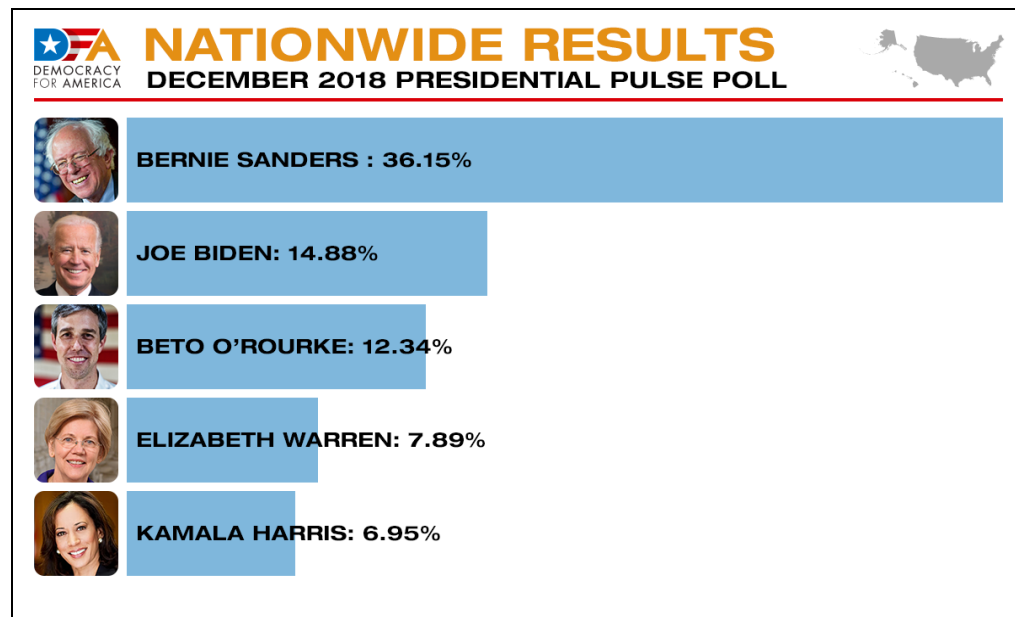
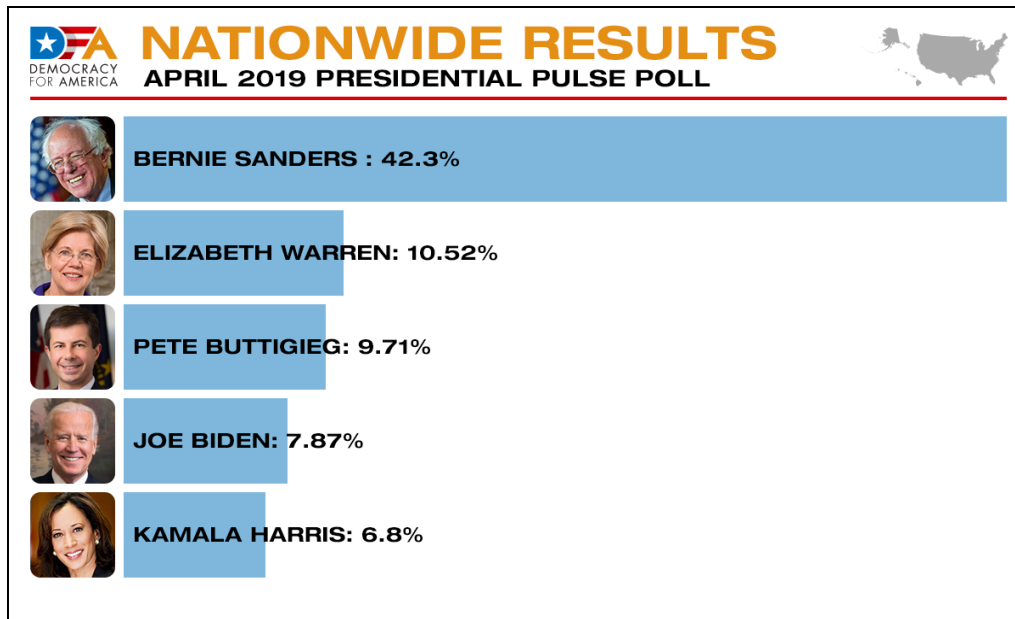


JOE BIDEN: 9.53%



ANDREW YANG 6.61%

These results show some real changes from our past two Presidential Pulse Polls in April 2019 and December 2018:



Top Takeaways

It's important to remember that, while it's still quite early in the 2020 nominating contest, the past three months have been incredibly eventful. When we [released our last Presidential Pulse Poll](#) on April 23, 2019, we were still two days away from Joe Biden's official entrance

into the race and, since then, we've seen the first round of 2020 primary debates in Miami and the results of the cycle's first truly comprehensive fundraising quarter.

While there's a great deal that can be learned about the state of the races from the top-line numbers themselves (which are also available at poll.democracyforamerica.com/results/), we have four key takeaways as we analyze these results next to our previous Presidential Pulse Polls and absorb the new information we're collecting on progressive's 2020 issue priorities.

1. Bernie Sanders, Elizabeth Warren, and Kamala Harris are the only three candidates in double digits -- and Warren & Harris' gains since our April poll have been massive.

From the very start of this cycle, we predicted that Sanders would have consistent strength among progressive primary voters, while Warren and Harris had the greatest room to grow and our latest Presidential Pulse Poll results bare this out.

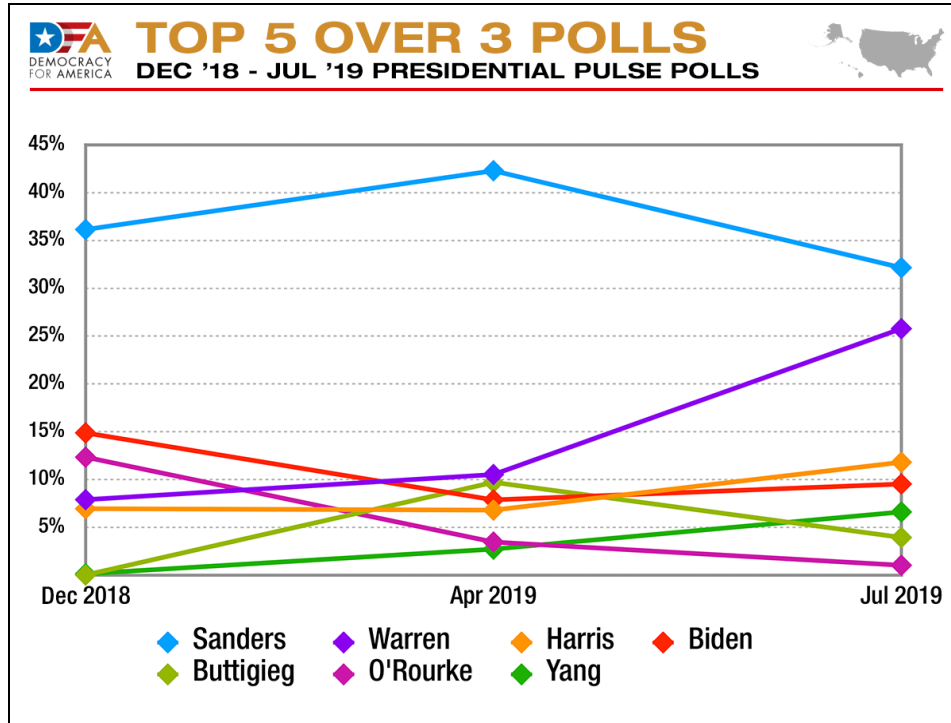
Sanders continues to ride high in the top position with just over 33% of the votes, but down from his high of 42.3% in April and with nowhere near as much distance between him and the candidates immediately behind him (e.g. +6.4% over Warren today vs. +31.8 over her in April)

But the real story of the last three months has been the explosive growth in support for Warren (a 240% increase in support since April, from 10.5% to 25.8%) that seems to match the growing coverage and fundraising numbers we've seen coming out of her campaign since April. Meanwhile, while Harris fell just short of doubling her support since April, she saw a 177% increase in support from 6.8% to 12.09%. That growth and other candidate's declines have vaulted Harris from 5th in April to the #3 spot over Biden today.

2. Pete Buttigieg deflates, Beto O'Rourke continues to decline, & the other Senators running fail to break 1%.

One of the big surprises of our April Presidential Pulse Poll was the surprisingly strong third-place finish of Mayor Buttigieg -- going from 14 write-in votes in our December 2018 poll to less than 1% away from the second-place finisher, Elizabeth Warren, in April. Unfortunately for Mayor Pete, it doesn't look like he was able to build on that early surge of momentum and lost nearly 60% of the support he had back in April to other candidates in the race. At the same time, Beto O'Rourke has continued his steady decline with progressive voters, losing another 70% (from 3.46% in April to 1.06% in July) of the already massively diminished support he had saw earlier this year after his

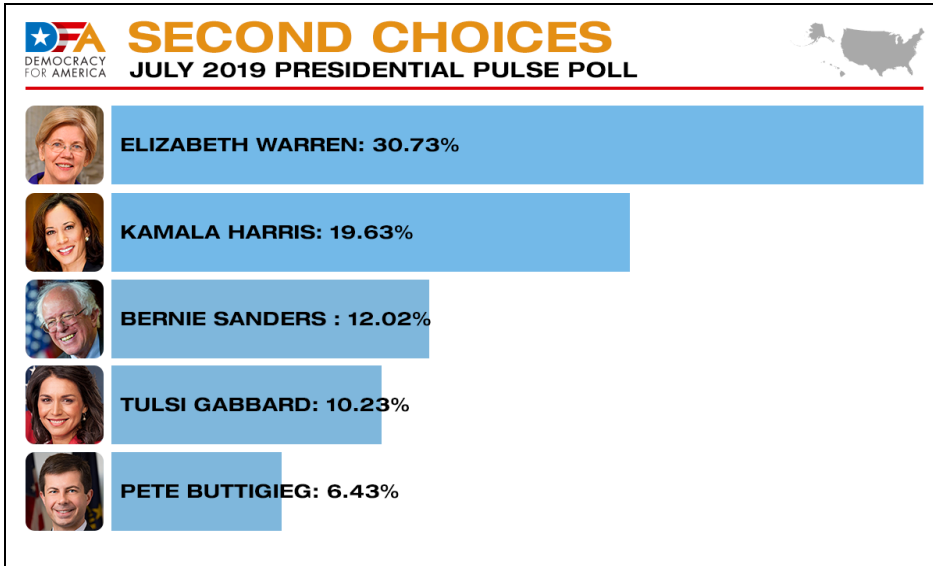
strong finish in our December poll.



It is also notable that while Sanders, Warren, and Harris sit at the top of our July Pulse Poll, they are the only U.S. Senators among the top-10 candidates in our poll and they're the only U.S. Senators to break 1%. Senator Klobuchar was in the top ten in both December and April, while Senators Booker and Gillibrand were in the top 10 back in December, but none appear to be at the top of poll respondents' minds in our latest results.

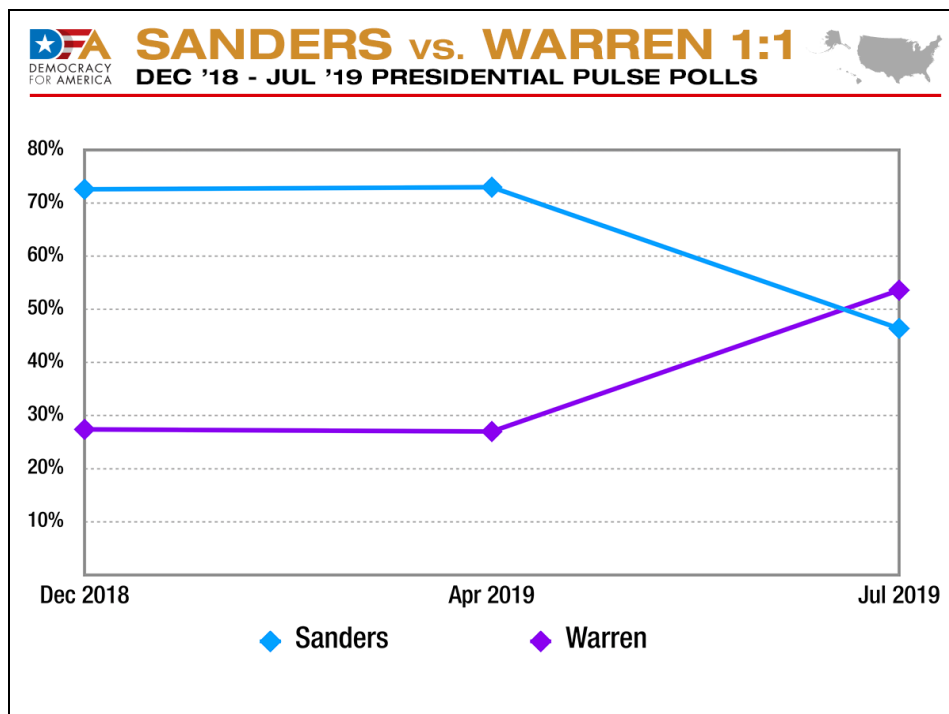
3. **Elizabeth Warren's strong "second choice" standing could be her secret weapon heading into the fall.**

Obviously, Sen. Warren's massive top-line gains in this poll are one of the chief takeaways from these results, but something else in this poll may be even more important in the weeks and months ahead: She's the leader in the battle for "second choice." In fact, if you were voting in this poll and selected someone other than her as your first choice, Warren was your second choice 30.73% of the time. Meanwhile, Sen. Harris was the second choice pick of 19.63% respondents, and our pulse poll's top candidate, Bernie Sanders, was the "second choice" for 12.02% of voters.



While any candidate would always prefer to be candidates first choice, being progressives' second choice could be extremely helpful as candidates drop out over the course of the long, iterative contest that's taking shape for the Democratic nomination in 2020.

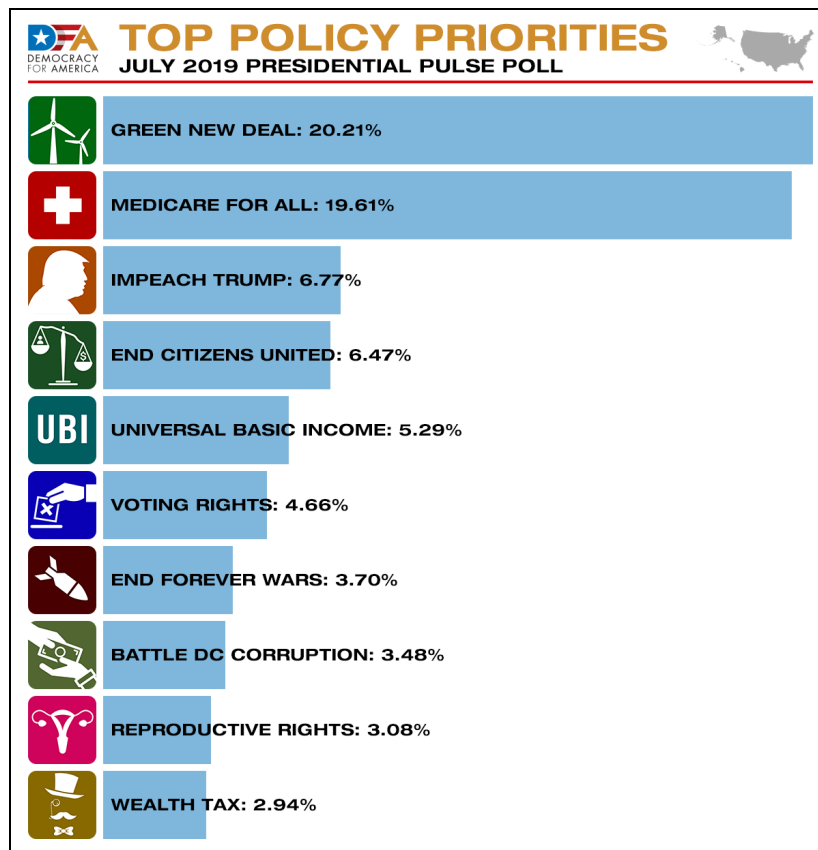
Interestingly, the strength of Warren's overall and second choice standing in this poll means that, right now, in a head-to-head race with Sanders, Warren would win 54% to 46%. That's a massive 54 point swing from our April 2019 Pulse Poll when, in a similar head-to-head match, Warren would have fallen to Sanders 73% to 27%.



4. **The Green New Deal edges out Medicare for All as the top issue for progressives, while backers' top issues often provide interesting insights about what may really underlying their support for a candidate.**

This Presidential Pulse Poll was the first time we've asked respondents what their top three issues are as they make their decisions about the 2020 race and it has certainly provided a great deal of interesting food for thought.

For one, while the Green New Deal didn't emerge as a national issue until the weeks after the 2018 Midterms, in less than a year, it has just barely edged out Medicare for All as the top issue, 20.21% vs. 19.61% for progressives in the 2020 nomination contest. It's also worth noting that, while Medicare for All's strength in our poll can largely be attributed to the depth of support it enjoys among Sanders supporters (it was the top issue for 34.2% of his supporters), the Green New Deal was able to come out on top by being the #1 issue for the wide range of supporters of other candidates.



Asking respondents about their top issues also provided a powerful lens to begin understanding what drives support for a number of candidates in the running. Fmr. Vice President Joe Biden infamously [called impeachment a “gigantic distraction.”](#) yet impeachment was the top issue for those identifying him as their top choice in this Pulse Poll something that likely speaks to Biden’s supporter’s intense focus on Trump.

Not dissimilarly, Andrew Yang’s surprisingly strong overall showing in this poll is undoubtedly tied to the white-hot interest his supporters have in his plan for a universal basic income (UBI) -- indeed, the link between Yang supporters and UBI (71%) is by far and away the strongest we see in our poll. While Yang is unlikely to make it to the third round of Democratic debates in September, these poll results make clear that UBI is a cutting edge priority that signals where progressive's priorities -- especially in how it relates to the social safety net -- are heading in the future.

Next Steps

While we haven’t announced the dates for the next DFA Presidential Pulse Poll, we are planning on conducting additional, similar straw-pull type polls of progressives as we move into the fall.

If anything, these poll results make clear that DFA members and progressive across the country are far from settled on who they plan to support in the 2020 nominating contest. We look forward to seeing what new dynamics, ideas, and approaches to this complicated race emerge as we move closer and closer to the first caucuses and primaries.